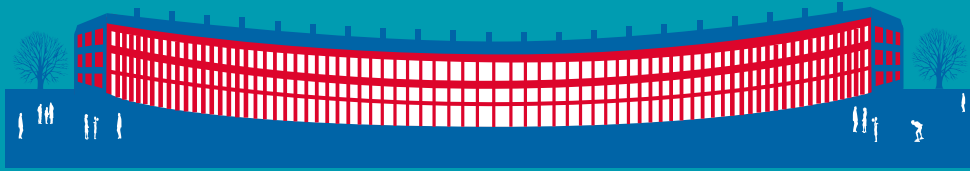




**AVON &
SOMERSET**
POLICE & CRIME
COMMISSIONER



Police and Crime Plan 2014-17

**SUPPORTING YOU TO
BE SAFE AND FEEL SAFE**



**BATH &
NORTH EAST
SOMERSET**



Welcome to your Police and Crime Plan for Bath and North East Somerset covering the second year of office for the Police and Crime Commissioner.



Police and Crime Commissioner (PCC), Sue Mountstevens and Area Commander, Chief Superintendent Geoff Spicer, have once again listened to the views of the people of Bath and North East Somerset and we hope your concerns and priorities for tackling crime in your area are reflected in this plan.



Crime is reducing year on year across Bath and North East Somerset and there are now approximately one third fewer crimes than there were five years ago. For the crimes that matter most and have the largest impact on victims we have also seen significant reductions. Dwelling burglary reducing by over 50% in the last five years and violent crime reducing by over 20%. We have been working hard with our partners and voluntary agencies to ensure local people are safe and supported.

It is not set in stone. It will change as new priorities emerge. Please keep talking to us. We want to hear from you and would encourage you to provide us with your feedback as we go forward.

By working together we can make a difference.

We want to build on these successes and will continue to tackle crime and anti-social behaviour (ASB) by relentlessly pursuing offenders, providing crime reduction advice to residents and providing a tailored service to victims.



Due to the financial constraints that have been placed on ourselves and other public services we have found it necessary to re-structure the Constabulary to ensure we are providing an effective service to residents. While this is the case we want to reassure you that this will improve the front line delivery of services in your area.

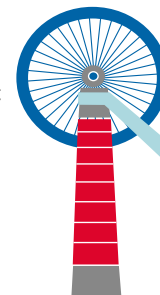
Sue Mountstevens

Geoff Spicer

Sue Mountstevens
Avon and Somerset Police
and Crime Commissioner

Geoff Spicer
Area Commander
Chief Superintendent

Bath and North East Somerset is a safe place to live. We will continue to relentlessly strive to make it safer and feel safer. This plan has come from listening to local people and communities.



The Police and Crime Commissioner's commitment to you

You have a right to **BE SAFE** and **FEEL SAFE** in your community. It is my aim to ensure that this is the case and that the people of Bath and North East Somerset have the highest level of trust and confidence in their Police, Community Safety and Criminal Justice services. My priorities are to:-

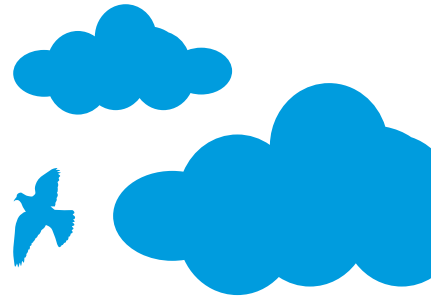
- Reduce the impact that anti-social behaviour has in our communities
- Prevent and reduce burglary and fear of burglary in your area
- Tackle domestic and sexual abuse, particularly towards women and children
- Ensure victims are at the heart of the criminal justice system

I am also committed to:

- Increasing transparency, accountability and confidence in the police
- Connecting the police with local people, particularly young people
- Working in partnership to tackle local issues of concern, such as road safety
- Early intervention and prevention
- Better co-ordination and integration of local services

Our promise to you...

- We will respond to your requests for service in an appropriate way
- You will have access to Avon & Somerset Police Services 24 hours a day, 365 days a year
- We will treat you professionally with fairness and respect
- We will tackle issues that matter most to you
- We will endeavour to prevent crime and protect you from criminals
- We will keep you informed and updated



Our work in

Victims: We are developing more joined up victim services that have the voice of victims at their heart

Nine out of ten victims of crime and eight out of ten victims of ASB are satisfied with the overall service provided by the police. We continue to encourage feedback from victims which we use to maintain and improve the services we provide.

Victim support services have now been co-located in Bath Police Station. This has led to better information-sharing and more effective referrals processes and signposting for victims. The PCC has allocated funding to support vulnerable victims of hate crime through a single service which is tailored to the needs of those who experience racist, faith-based, homophobic or disability-related hate crime.

Our Youth Offending Team is working with young people to identify trends and potential risk of crime. They continue to deliver intervention programmes such as the knife awareness programme which was recently launched in Southside.

35 'Safe Place' locations have been established across Keynsham, Midsomer Norton, Radstock and Bath city through the Community Safety Partnership. A 'safe place' is a group of shops or business premises which have agreed to offer safe place for someone with a learning disability to go into when they are experiencing or feel afraid of hate crime. There are three Networks in BANES meeting once a month to improve the lives of people with learning disabilities.

Victims at the heart of the criminal justice system

Anti-social behaviour: We are working with partner agencies to better protect vulnerable people and tackle the issues affecting your community

We have re-designed our 'Stay Safe' Consequences programme aimed at Year 6 children into an interactive booklet. This lesson-based resource includes activities on how to stay safe and be a good citizen. It is delivered by Police Community Support Officers (PCSOs) and offered to all primary schools across BANES.

The Local Authority and Police have been working with local residents to tackle issues of anti-social behaviour in Midsomer Norton through the introduction of a Community Alcohol Partnership. This has resulted in the introduction of Street Marshalls and 'dedicated public place orders' which allow for the seizure of alcohol being consumed on the streets.

The PCC provided funding to support 'Time Bank Plus' which works with young people in Twerton and 'Mentoring Plus'. These initiatives aim to reduce the risk of ASB and low level crime through positive activities, support and mentoring.

We also now have over 50 volunteer Street Pastors giving up their Friday and Saturday nights to help patrol Midsomer Norton. The pastors 'Care, Listen, Talk and offer Practical Help' to people who are distressed, in difficulty or frightened. Midsomer Norton is the first area to have received a National Award for Excellence from the Community Alcohol Partnership Scheme.

Anti-social behaviour

your area

Burglary

Domestic and Sexual Abuse



Burglary: We are tackling the causes of burglary and improving our approach to prevention, enforcement and rehabilitation

We will continue to develop and promote initiatives such as www.immobilise.com where officers can register people's property and the use of tracking software on mobile phones and computers. These initiatives have proved successful in returning stolen property to owners and identifying offenders.

Our trained carpenters visit the homes of vulnerable victims of crime as part of the 'Safer Homes' scheme. The carpenters provide advice on security issues and where necessary, fit locks, bolts, chains and other security features free of charge.

Positive feedback and low repeat victimisation rates indicate that the scheme continues to be effective in reducing fear and risk of victimisation.

A close working relationship with our neighbouring police forces is enabling us to identify and capture burglars that are operating across area boundaries. We will continue to share intelligence and identify crime patterns to ensure that we are relentlessly pursuing offenders and bringing them to justice.

Domestic and Sexual Abuse: We are working to increase confidence amongst victims to report abuse and improve the services they receive

The PCC has allocated funding for the Independent Domestic Violence Advisor Service (IDVAs), which reaches out to the community and gives specialist support to reduce the risk of harm to adults and children. Southside Project continues to support vulnerable victims of domestic abuse in the area through trained IDVAs and around 100 registered volunteers.

The Constabulary's youth strategy officer will continue to work with schools across BANES to introduce the "Only Yes Means Yes" programme. This is providing young people with advice and guidance with regard to sexual offences.

We have been working extensively with partners on an awareness campaign for domestic violence. This is helping agencies to better identify and support those suffering from domestic abuse.

Officers and staff are also participating in a training programme produced by the Southside project and CURO housing. This programme uses professional actors to re-create real life situations and improve awareness of and responses to domestic abuse.

Local issues and partnership priorities

Road safety

Following concerns raised by the community regarding speeding vehicles in the village of Farmborough local people were offered the opportunity to get involved in tackling this issue.

Local volunteers helped to form a Community Speedwatch (CSW) - which is a partnership between the Community, the Police, Fire Service, Parish Council and County Council that aims to tackle speeding traffic and improve the quality of life for local residents. Around 300 vehicles have been caught speeding in the area, with some going as fast as 58mph in 30mph zones. The Camera Safety Partnership was tasked to assist the CSW scheme in response to the issue, which resulted in nearly 100 speeding drivers being caught in just one hour.

Our agencies are working together to consider and review signage and engineering features to help reduce speed in the area and the CSW will continue to monitor the speed of traffic travelling through the village. This is an excellent example of local people raising their concerns and then helping the police by getting involved in tackling the issue.

City centre begging and ASB

People living and working in Bath City Centre raised concerns regarding street drinking and ASB linked to excessive drinking. This is a complex issue that requires support for those suffering addiction and robust enforcement to tackle those who fail to engage.

Agencies worked together to tackle the issue, co-ordinating support services and enforcing Court and Anti-social Behaviour Orders. The “Killing with Kindness” campaign was used to divert money normally given directly to people on the street to charities and other organisations that can provide more targeted support. This included a scheme which enables local people to purchase vouchers for food and accommodation.

We continue to carry out high visibility patrols in key locations across the City - tackling and reducing begging in areas such as Laura Place and Argyle Street. We will also continue to signpost people to available support services and robustly enforce alcohol banning orders and seize alcohol from anyone found drinking on the streets in those locations.

“Community safety is not just about tackling crime but about improving our quality of life and reducing the fear of crime in our communities. It is about being safe and feeling safe, by addressing locally identified priorities. Everyone, no matter who they are or where they live in Bath and North East Somerset, has the right to be and feel as safe without the concerns of being a victim of crime or being harmed.”

Sue Dicks, BANES Council Community Safety Manager

Sue making a difference

“I continue to feel privileged to be your Police and Crime Commissioner. It is such an incredibly worthwhile job, listening to and working with residents to make our communities safer.”

Sue has doubled the amount of community safety money for Bath & North East Somerset. This year there will be £110,000 towards cutting crime and keeping people safe.

The money will go towards projects like a hate crime service run by Stand Against Racism and Inequality (SARI).

Commissioner’s Community Action Fund

Residents and groups in Bath and North East Somerset have benefited from over £26,000 to tackle the policing priorities in their area.



Sue listens to residents...



Sue has visited Julian House Homeless Shelter, Curo Homes, Midsomer Norton Community Alcohol Partnership, University of Bath, and Rose Cottage Café in Twerton.

Sue hosted a public forum in Bath giving residents the chance to quiz the police and to make the police more accessible to the communities they serve.

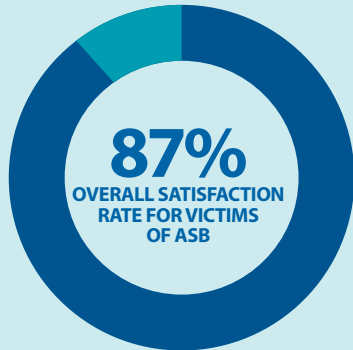


Time Bank Plus receives £5000 working with young people in Twerton to reduce anti-social behaviour

Mentoring Plus receives £3000 towards the mentoring of young people at risk of offending

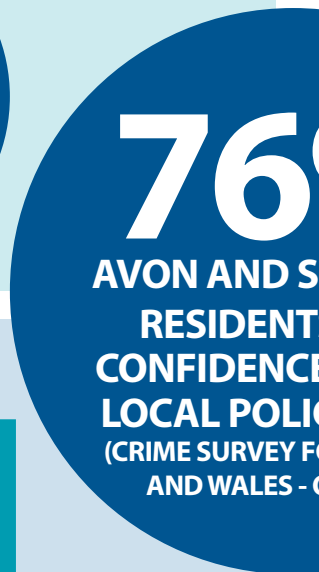
Curo receives £5000 to support a youth project in Bath and Keynsham targeted at community clear ups, consultation and targeted plans to reduce anti-social behaviour

Reduce the impact of Anti-Social-Behaviour in your community



We have been working with schools to educate young people on staying safe.

We have been working with partners in Midsomer Norton and continue to support the Community Alcohol Partnership.



Preventing and reducing burglary and the fear of burglary in your area



We are encouraging people to register their belongings on immobilise, to identify ownership of property and catch offenders

We continue to work with partners to identify vulnerable people and to support them in better securing their property.



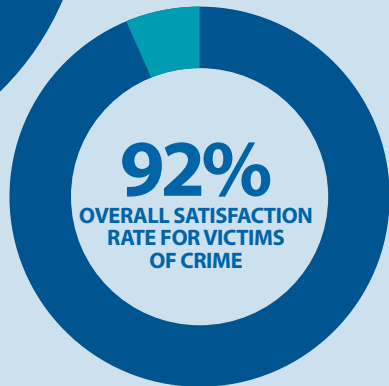
Tackling domestic and sexual abuse, particularly towards women and children

%
OMERSET
S HAVE
E IN THEIR
CE FORCE
OR ENGLAND
(OCT 2013)



We have been raising awareness of sexual offences in secondary schools.

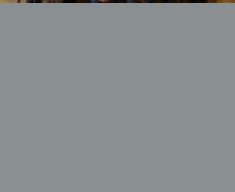
We have been working with partners to raise awareness of domestic violence to help better identify and support those suffering from domestic abuse.



Putting victims at the heart of the Criminal Justice System

We have been working closely with victim support services to ensure better sharing of information and more timely referrals and support to victims.

35 'Safe Places' have been established across the area to provide a safe place for people who may be experiencing hate crime.



How can you get involved or discuss policing concerns?



- Attend events and give us your views face-to-face
- Come along to public meetings and find out more about what we do
- Have your say through online questionnaires, consultations or web chats
- Tell us what your priorities are online through 'Have Your Say'
- Become a Special Constable, a Cadet, Custody Visitor or Volunteer
- Join Rural Watch, Neighbourhood Watch or your local Independent Advisory Group

You can find more information on any of the above and keep up-to-date with all events, meetings and news through the website:

WWW.AVONANDSOMERSET-PCC.GOV.UK

WWW.AVONANDSOMERSET.POLICE.UK

or through social media:

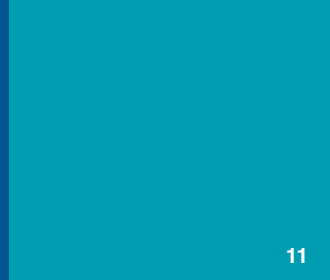


[@AANDSPCC](https://twitter.com/AANDSPCC), [@SUMOUNTSTEVENS](https://twitter.com/SUMOUNTSTEVENS), [@ASPOLICE](https://twitter.com/ASPOLICE)



[/AVONANDSOMERSETPOLICE](https://www.facebook.com/AVONANDSOMERSETPOLICE) /[AANDSPCC](https://www.facebook.com/AANDSPCC)







AVON & SOMERSET POLICE & CRIME COMMISSIONER



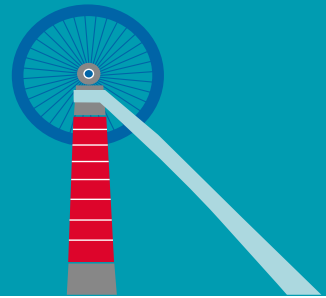
Avon and Somerset Police and Crime Commissioner
Police Headquarters, Valley Road, Portishead, BS20 8JJ

Telephone: 01275 816377

Fax: 01275 816388

WWW.AVONANDSOMERSET-PCC.GOV.UK

WWW.AVONANDSOMERSET.POLICE.UK



You can find more details about the Commissioner's Police and Crime Plan for the Avon and Somerset area at www.avonandsomerset-pcc.gov.uk