



**AVON &
SOMERSET**
POLICE & CRIME
COMMISSIONER



Police and Crime Plan 2014-17

**SUPPORTING YOU TO
BE SAFE AND FEEL SAFE**



MENDIP



Welcome to your Police and Crime Plan for the Mendips

Police and Crime Commissioner (PCC) Sue Mountstevens, and Area Commander Chief Superintendent Nikki Watson have listened to the views of local people and communities of the Mendips.

We hope this plan reflects your concerns and priorities for tackling crime in your community. We will work with our local authority and key partners to help make the Mendips a safe and enjoyable place to live, work and visit.

Due to the financial constraints that have been placed on ourselves and other public services we have found it necessary to re-structure the Constabulary to ensure we are providing an effective service to local people. We want to reassure you that this has not had an impact on the front line delivery of services in your area.

We are planning to move from our large station in Frome to smaller premises – but we promise that our service to the local community will not be interrupted while we find a smaller site.

Over the past year we have addressed key issues including rural crime, speeding and anti-social behaviour. We want to build on these successes and continue make your streets safer by relentlessly pursuing offenders, providing crime reduction advice and supporting victims of crime.

Mendip is a safe place to live. We would like it to be safer and feel safer. This plan has come from listening to the people and communities of the Mendips. It is not set in stone. It will change as new priorities emerge. Please keep talking to us. We want to hear your concerns, problems and hopefully praise as we go forward.

By working together we can make a difference.



Sue Mountstevens

Sue Mountstevens
Avon and Somerset Police
and Crime Commissioner



N.Watson

Nikki Watson
Area Commander
Somerset



The Police and Crime Commissioner's commitment to you

You have a right to **BE SAFE** and **FEEL SAFE** in your community. It is my aim to ensure that this is the case and that the people of Mendip have the highest level of trust and confidence in their Police, Community Safety and Criminal Justice services. My priorities are to:-

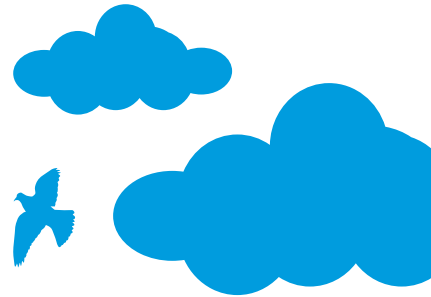
- Reduce the impact that anti-social behaviour has in our communities
- Prevent and reduce burglary and fear of burglary in your area
- Tackle domestic and sexual abuse, particularly towards women and children
- Ensure victims are at the heart of the criminal justice system

I am also committed to:

- Increasing transparency, accountability and confidence in the police
- Connecting the police with local people, particularly young people
- Working in partnership to tackle local issues of concern, such as road safety
- Early intervention and prevention
- Better co-ordination and integration of local services

Our promise to you...

- We will respond to your requests for service in an appropriate way
- You will have access to Avon & Somerset Police Services 24 hours a day, 365 days a year
- We will treat you professionally with fairness and respect
- We will tackle issues that matter most to you
- We will endeavour to prevent crime and protect you from criminals
- We will keep you informed and updated



Our work in

Victims: We are developing more joined up victim services that have the voice of victims at their heart

The PCC will commission local services to support victims, bringing together existing good practice and ensuring victims have access to support regardless of whether they have reported to the police. Read more on the PCC website.

We are piloting Avon and Somerset Constabulary's approach to the Community Trigger which is a process that will help to empower victims and communities by giving them the right to demand that agencies deal with persistent anti-social behaviour.

We continue to invest in TrackMyCrime – a modern online system that keeps victims informed in real time about how the police are progressing their case. This ground breaking service has been in use since 2010 and has set Avon and Somerset Constabulary ahead in terms of victim care.

We have increased the number of officers who are specifically trained to provide the first response to reports of serious sexual assaults. This is ensuring that the police are able to immediately offer specialist investigators when a victim of such an offence calls.

Victims at the heart of the criminal justice system

Anti-social behaviour: We are working with partner agencies to better protect vulnerable people and tackle the issues affecting your community

We have established a 'Choice and Consequences' ASB workshop that is proving successful in reducing repeat offending amongst young people aged 10 to 17. Local beat teams are being trained to deliver regular ASB Workshops at their local station.

Our Safer Stronger Neighbourhood Team continues to sanction, disrupt and evict offenders, which has included work in Shepton Mallet to tackle the supply of recreational drugs.

We continue to take enforcement action to tackle ASB in your area. This has included, for example, positive action against anti-social tenants in an area of Street which led to the Safer Stronger Neighbourhood Team and Knightstone Housing winning an award.

As a result of concerns raised by local residents, we have purchased 'alcohol meter wands' which help us to detect underage drinking in our rural towns.

Anti-social behaviour

Burglary

Burglary: We are tackling the causes of burglary and improving our approach to prevention, enforcement and rehabilitation

Our trained carpenters visit the homes of vulnerable victims of crime as part of the 'Safer Homes' scheme. The carpenters provide advice on security issues and where necessary, fit locks, bolts, chains and other security features free of charge. Positive feedback and low repeat victimisation rates indicate that the scheme continues to be effective in reducing fear and risk of victimisation.

Street Neighbourhood Watch has been recognised nationally as an example of best practice. With over 500 members, the watches run regular crime prevention events and raise funds for local groups.

We will continue to tackle rural crime in the area. A dedicated rural crime event held in Frome in 2013 led to more than 30 referrals for crime prevention surveys.

We have re-invigorated and continued to deliver the "Sheducation" initiative to groups across the area. This is helping to prevent and reduce non-domestic burglaries such as shed and garage breaks. We will continue to develop and promote initiatives such as www.immobilise.com where officers can register people's property and the use of tracking software on mobile phones and computers. These initiatives have proved successful in returning stolen property to owners and identifying offenders.

Domestic and Sexual Abuse

Domestic and Sexual Abuse: We are working to increase confidence amongst victims to report abuse and improve the services they receive

"Only Yes Means Yes" training has been delivered to various schools and Strode College. This provides young people with advice and guidance on sexual offences, looking in particular at the issue of consent, rape and sexual assault.

Police Community Support Officers (PCSOs) are being trained to provide Child Exploitation On-line Protection advice to young people.

The PCC has allocated funding for the Independent Sexual Violence Advisor Service (ISVAs), which reaches out to the community and gives specialist support and intervention to reduce the risk of serious harm to adults and children.

We continue to support the multi-agency Domestic Abuse Forum which brings agencies together to support and tackle domestic abuse in the area.



Local issues and partnership priorities

The Safer Somerset Partnership will be working closely with the PCC to support shared priorities and create safer, stronger communities. Taking a coordinated approach to tackling crime means that partner agencies throughout the county are better positioned to reduce crime, disorder and anti-social behaviour affecting our local communities.

Cllr Nigel Taylor, Chair of the Safer Somerset Partnership

Speeding Traffic

Speeding remains the single biggest issue that the people of the Mendips want the police and partners to address. To date this has led to help the establishment of 28 Community Speed Watch (CSW) teams across the area.

CSW not only send advisory letters to motorists, but also use the data collected to secure bids for the services of the safety camera vans. As a result of the schemes, community volunteers, the police and the local authority have secured the use of the Mobile Speed Enforcement Van in Frome to help educate drivers.

Mendip Community Speed Watch also regularly forms part of Avon and Somerset Constabulary and National speed enforcement campaigns.

“The scheme allows communities to take control of their roads and relies on volunteers and local engagement to help motorists to reduce their speed.

Matt Ayres, Head of the Roads Policing Unit Superintendent

Anti-social Behaviour

Mendip District Council, the Police and social housing providers are trialling the community trigger as part of their response to ASB. This will give victims the right to demand that agencies take action over ASB complaints that have repeatedly been ignored. Agencies are also working together in delivering the Troubled Families initiative and reduce ASB, truancy and domestic violence in the Glastonbury area.

Aster Communities (housing provider) is one of a number of partner organisations that supports our successful multi-agency approach to tackling ASB in Mendip.

“Aster Communities has been working in close partnership with Avon and Somerset Police in Mendip to tackle ASB in a joined-up and robust way. Together, we’ve found innovative new ways of working which have produced improved responses and outcomes for victims of ASB.

**Darren Brazil,
Head of Anti-social Behaviour, Aster Communities**

Integrated Services

Shape Mendip is a pioneering new partnership with public, private and voluntary organisations which is redesigning the way local services are delivered. Mendip District Council’s offices in Cannard’s Grave Road, Shepton Mallet have been redeveloped to create a new multi-agency Hub.

Sue making a difference

“I continue to feel privileged to be your Police and Crime Commissioner. It is such an incredibly worthwhile job, listening and working with residents to make our communities safer.”

Sue has doubled the amount of community safety money for Somerset. This year there will be £357,000 towards cutting crime and keeping people safer.

Just some of the projects include:

- A new skate park in Shepton Mallet
- An anti-social behaviour support service
- Introducing Independent Domestic Violence Advisor service to Somerset hospitals

Commissioner's Community Action Fund

Sue has launched the Commissioner's Community Action Fund where you can apply for up to £5,000 for your community.

Apply today at www.avonandsomerset-pcc.gov.uk



Sue hosted a public forum in Frome giving residents the chance to quiz the police and to make the police more accessible to the communities they serve.

Just some of the places Sue has also visited include Shepton Mallet Street, Wells, Clarks Village, the Bath & West Show and Frome Cheese Show.



The Independent Sexual Violence Advisor Service continues to support and empower victims of sexual violence

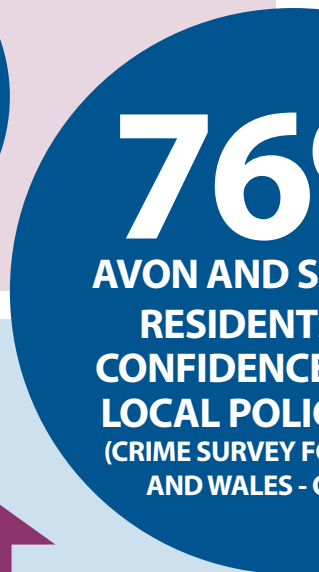
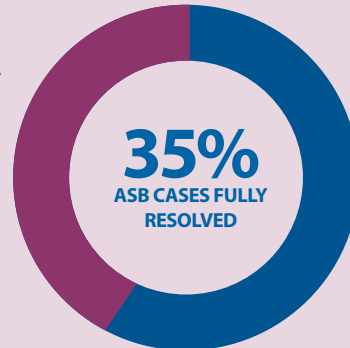
The PCC has funded deployable CCTV cameras in the area to tackle ASB, particularly in the Glastonbury area

We continue to support the Youth Offending Team in your area in steering young people away from crime

Reduce the impact of Anti-Social-Behaviour in your community



We recently introduced a Community Trigger in the Mendip area. The trigger brings all agencies together to review your anti-social behaviour case and find a solution to the problem.



Preventing and reducing burglary and the fear of burglary in your area



We have been encouraging the public to register their property at www.immobilise.com

We have introduced 'no cold calling' zones in order to reduce opportunistic doorstep criminals.

** Largely due to a spate of incidents in Autumn 2013. Longer term, burglary rates across the Mendips continue to fall.



Tackling domestic and sexual abuse, particularly towards women and children

NO SIGNIFICANT
CHANGE IN LEVELS OF
REPORTED DOMESTIC
ABUSE AND SERIOUS
SEXUAL OFFENCES

We have visited schools and academies across the area to raise awareness about sexual offences, in particular raising the profile of the "Only Yes Means Yes" campaign

*While the rate of detections has fallen, the number of detections has remained static - reflecting increased reporting more generally

SERIOUS SEXUAL
OFFENCES DETECTION
RATE

-17% to
30%*

%
SOMERSET
S HAVE
E IN THEIR
CE FORCE
OR ENGLAND
OCT 2013)



Putting victims at the heart of the Criminal Justice System

We have introduced a 'Safe Places' scheme which provides a safe place for vulnerable victims to go to. Just look for the logo.

"Track my Crime" gives all victims of crime the opportunity to be updated by the police online.



How can you get involved or discuss policing concerns?



- Attend events and give us your views face-to-face
- Come along to meetings and find out more about what we do
- Have your say through online questionnaires, consultations or web chats
- Tell us what your priorities are online through 'Have Your Say'
- Become a Special Constable, a Cadet, Custody Visitor or Volunteer
- Join Rural Watch, Neighbourhood Watch or your local Independent Advisory Group

You can find more information on any of the above and keep up-to-date with all events, meetings and news through the website:

WWW.AVONANDSOMERSET-PCC.GOV.UK

WWW.AVONANDSOMERSET.POLICE.UK

or through social media:

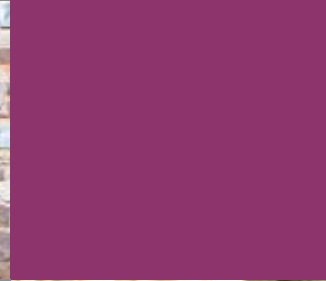


[@AANDSPCC](https://twitter.com/AANDSPCC), [@SUMOUNTSTEVENS](https://twitter.com/SUMOUNTSTEVENS), [@ASPOLICE](https://twitter.com/ASPOLICE)



[/AVONANDSOMERSETPOLICE](https://www.facebook.com/AVONANDSOMERSETPOLICE), [/AANDSPCC](https://www.facebook.com/AANDSPCC)







AVON & SOMERSET POLICE & CRIME COMMISSIONER



Avon and Somerset Police and Crime Commissioner
Police Headquarters, Valley Road, Portishead, BS20 8JJ

Telephone: 01275 816377

Fax: 01275 816388

WWW.AVONANDSOMERSET-PCC.GOV.UK

WWW.AVONANDSOMERSET.POLICE.UK



You can find more details about the Commissioner's Police and Crime Plan for the Avon and Somerset area at www.avonandsomerset-pcc.gov.uk