



**AVON &
SOMERSET**
POLICE & CRIME
COMMISSIONER



Police and Crime Plan 2014-17

**SUPPORTING YOU TO
BE SAFE AND FEEL SAFE**



**NORTHERN
SOMERSET**



Welcome to your Police and Crime Plan for North Somerset



Police and Crime Commissioner (PCC) Sue Mountstevens, and Area Commander Chief Superintendent Nikki Watson have listened to the views of the people and communities from North Somerset.

We hope this plan reflects your concerns and priorities for tackling crime in your community. We will continue to work with our local authority and key partners to help make North Somerset a safe and enjoyable place to live, work and visit.

In the past year we have had success in tackling drug crime, anti-social behaviour (ASB) and burglary, securing some significant convictions of offenders who are individually responsible for high numbers of offences.

We have addressed other important issues including helping families whose members were involved in ASB or repeat crime to address the causes of the problems and help to support them to break their cycle of offending and make some positive changes. We are also robustly dealing with causes and consequences of alcohol related crime and ASB on our community's confidence and the local economy. We want to build on these successes and will continue to tackle crime and ASB by relentlessly pursuing offenders, providing crime reduction advice to people and supporting victims of crime.

We are continuing to work with partner agencies to integrate and co-locate services in North Somerset through arrangements such as the Town Hall and Castlewood enquiry offices. We have also found it necessary to restructure the way the Constabulary operates, however this has not had an impact on front line services in your area.

North Somerset is a safe place to live. We would like it to be safer and feel safer. This plan has come from listening to local people and our local communities. It is not set in stone. It will change as new priorities emerge. Please keep talking to us. We want to hear your concerns, problems and hopefully praise as we go forward. By working together we can make a difference.



Sue Mountstevens

Sue Mountstevens

Avon and Somerset Police
and Crime Commissioner



N. Watson

Nikki Watson

Area Commander
Somerset



The Police and Crime Commissioner's commitment to you

You have a right to **BE SAFE** and **FEEL SAFE** in your community. It is my aim to ensure that this is the case and that the people of North Somerset have the highest level of trust and confidence in their Police, Community Safety and Criminal Justice services. My priorities are to:-

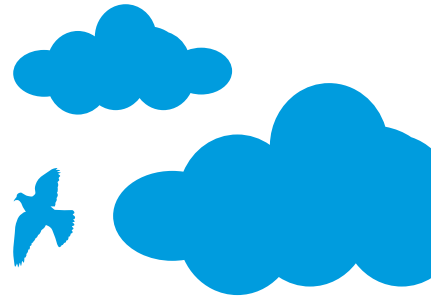
- Reduce the impact that anti-social behaviour has in our communities
- Prevent and reduce burglary and fear of burglary in your area
- Tackle domestic and sexual abuse, particularly towards women and children
- Ensure victims are at the heart of the criminal justice system

I am also committed to:

- Increasing transparency, accountability and confidence in the police
- Connecting the police with local people, particularly young people
- Working in partnership to tackle local issues of concern, such as road safety
- Early intervention and prevention
- Better co-ordination and integration of local services

Our promise to you...

- We will respond to your requests for service in an appropriate way
- You will have access to Avon & Somerset Police Services 24 hours a day, 365 days a year
- We will treat you professionally with fairness and respect
- We will tackle issues that matter most to you
- We will endeavour to prevent crime and protect you from criminals
- We will keep you informed and updated



Our work in

Victims: We are developing more joined up victim services that have the voice of victims at their heart

The PCC will commission local services to support victims, bringing together existing good practice and ensuring victims have access to support regardless of whether they have reported to the police. Read more on the PCC website

We are introducing a new risk assessment for victims of hate crime which will ensure that our most vulnerable victims are correctly identified at the first point of contact and have introduced a single point of contact for Neighbourhood Watch for North Somerset.

Our Neighbourhood officers are working closely with young people in the area. During the summer holidays officers issued Neighbourhood Community Cards which had been designed by local young people and included personal safety messages. This initiative is now being rolled out across the rest of Avon and Somerset.

We continue to invest in TrackMyCrime – a modern online system that keeps victims informed in real time about how the police are progressing their case. This ground breaking service has set Avon and Somerset Constabulary ahead in terms of victim care.

Victims at the heart of the criminal justice system

Anti-social behaviour: We are working with partner agencies to better protect vulnerable people and tackle the issues affecting your community

We have developed strong partnership links with the council-led 'High Impact Families' Programme, which works with particular families to reduce their level of anti-social behaviour and tackle the causes of the problems to reduce future incidents.

A "traffic light" system for licensed premises has been introduced. This helps our agencies focus work on tackling the poor management of premises and make licensees more responsible for their impact on alcohol-related crime and disorder. A multi-agency problem solving group is also working to tackle crime and anti-social behaviour relating to alcohol, licensing and the night time economy more generally.

We are fostering close working relationships with local schools to help tackle and reduce ASB. This has proved to work well in both term time and with Police Community Support Officer (PCSO) working with young people out of school. We also continue to work with partners to conduct 'truancy sweeps'.

A project to tackle anti-social behaviour on the Bourville estate in Weston is being rolled out based on the success of an initiative in Taunton. This will link in with other work being undertaken by Council and Health partners in the area.

Anti-social behaviour

your area

Burglary

Domestic and Sexual Abuse



Burglary: We are tackling the causes of burglary and improving our approach to prevention, enforcement and rehabilitation

We have introduced 18 new “No Cold Calling Zones” in North Somerset since April 2013 covering up to 1,000 houses

Two men who committed 28 burglaries across North Somerset were given prison sentences earlier in the year and served with orders that ban them from returning to the area for five years after their release.

We have conducted pro-active night time operations using cross country bikes and off-road cars to target criminals who commit crime in our rural communities.

Our trained carpenters visit the homes of vulnerable victims of crime as part of the ‘Safer Homes’ scheme. The carpenters provide advice on security issues and where necessary, fit locks, bolts, chains and other security features free of charge. Positive feedback and low repeat victimisation rates indicate that the scheme continues to be effective in reducing fear and risk of burglary.

Domestic and Sexual Abuse: We are working to increase confidence amongst victims to report abuse and improve the services they receive

Future funding for our specialist Independent Domestic Violence Advisor Service (IDVAs) has been secured by a partnership of organisations in North Somerset and includes contributions from the PCC and Constabulary. This means more people will continue to get help to overcome abuse.

We will continue to deliver the “Only Yes Means Yes” training to local secondary schools. This provides young people with advice and guidance on sexual offences, looking in particular at the issues of consent, rape and sexual assault.

We have increased in the amount of officers who are specifically trained to respond to reports of serious sexual assault. This ensures that the police are able to immediately offer specialist investigators when a victim of such an offence calls.

We have seen an increase in referrals to the multi-agency group which identifies and deals with high risk victims of domestic abuse. This means that victims receive a better level of service from a range of agencies to ensure that all aspects of their case and care are dealt with effectively and efficiently.

Local issues and partnership priorities

Night-time Economy

We are working with partners in Weston-super-Mare to improve people's trust and confidence in the police and to reduce the fear of crime particularly in relation to visiting the town in the evening

We have further developed initiatives to tackle anti-social behaviour and alcohol-related crime over the last year, which has included a night-time economy hub that enables different agencies, such as police and street pastors, street wardens, police, environmental services and Weston General Accident and Emergency to work better together.

We have also been working with partners, local commerce and the Local Alcohol Action Area to develop Weston-super-Mare as a family resort, including more activities and attractions for families and the older generation in and around Dolphin Square.

Road Safety

Road safety remains one of the most important issues for residents attending our "Have your say" meetings in North Somerset. We continue to work in partnership with local communities to support the roll out of initiatives such as Community Speedwatch by training and supporting the establishment of new groups, providing information where needed and promoting best practice.

The scheme allows communities to take control of their roads and relies on volunteers and local engagement to help motorists to reduce their speed.

Matt Ayres

Head of the Roads Policing Unit Superintendent

Integrated and Co-ordinated Services

The council and the police are two of the main organisations communities look to when they need help. Even though most people contact these agencies by phone, we recognise that it is still important for local people to be able to discuss things in person.

Police enquiry services in Weston-super-Mare moved from the police station to the Town Hall in 2013 in partnership with North Somerset Council. This created a 'one stop shop' where people can access a range of public services. The recently refurbished Town Hall provides a welcoming and friendly environment for people wanting to access police services. A similar approach on a smaller scale has also been adopted at the Castlewood offices in Clevedon.

All staff at the Town Hall and at Castlewood sites support both police and council services, which is believed to be unique in the country at this time by working together under one roof, we can deliver services more effectively and make financial savings across both organisations.

Avon and Somerset Police and North Somerset Council have been awarded a Home Office Innovation Fund for a new Citizen Portal. The fund will enable a new web-based application to be created allowing residents in North Somerset to access local authority and police services in one place.



Sue making a difference

“I continue to feel privileged to be your Police and Crime Commissioner. It is such an incredibly worthwhile job, listening and working with residents to make our communities safer.”

Sue has doubled the amount of community safety money for North Somerset. This year there will be £138,000 towards cutting crime and keeping people safe.

The money will go towards a domestic abuse service and an anti-social behaviour case work service.

Commissioner's Community Action Fund

Residents and groups in North Somerset have benefited from over £35,000 to tackle the policing priorities in your area.



You can apply for up to £5,000 at www.avonandsomerset-pcc.gov.uk



Sue listens to residents...

Just a few of the places Sue has visited in North Somerset include Weston College, Alliance Homes, Nailsea Precinct, Weston-super-Mare Town Hall and the Healthy Living Centre.

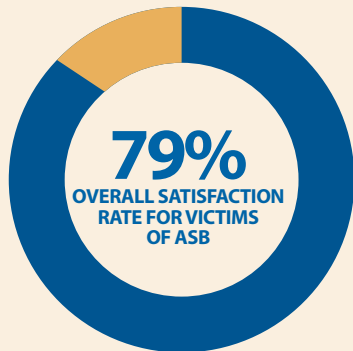
Sue is committed to making the police accessible to local people by hosting public forums. Residents in Weston-super-Mare were invited to the Town Hall to ask questions of the PCC and senior officers and to discuss any local policing concerns.

Women's Project receives £3000 to run a counselling service for victims of domestic abuse

Alabare Care Centres receives £2,000 to support training of volunteer community befrienders, who engage with homeless veterans

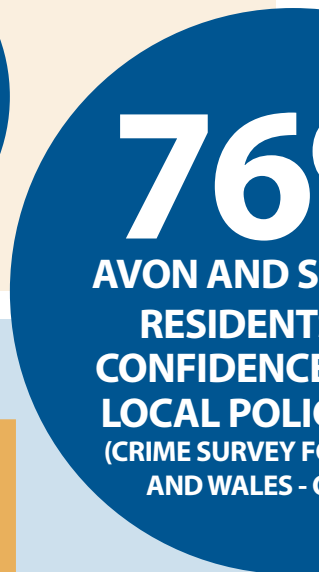
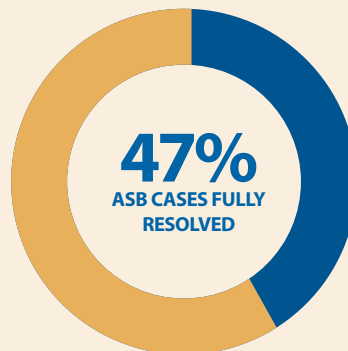
The Coles Shed receives £2500 to support the development of a sensory garden by disadvantaged young people

Reduce the impact of Anti-Social-Behaviour in your community



We have been working to identify key areas of our service to victims which we could improve upon and improving our communication with those affected.

Identifying hot spot areas, including those within the Night Time Economy is really helping us to focus our resources in the right way.



Preventing and reducing burglary and the fear of burglary in your area



We have been encouraging the public to register their property on www.immobilise.com

'No cold calling zones' have been introduced in order to reduce opportunistic doorstep criminals



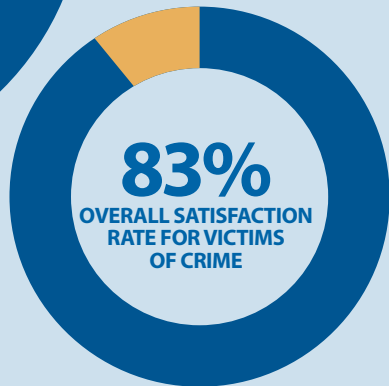
Tackling domestic and sexual abuse, particularly towards women and children

%
SOMERSET
S HAVE
E IN THEIR
CE FORCE
OR ENGLAND
OCT 2013)



We have visited schools and academies across the area to raise awareness about sexual offences, in particular raising the profile of the "Only Yes Means Yes" campaign.

*While the rate of detections has fallen, the number of detections remained static, reflecting increased reporting more generally



Putting victims at the heart of the Criminal Justice System

We have introduced a 'Safe Places' scheme which provides a safe place for vulnerable victims to go to. Just look for the logo.

"Track my Crime" gives all victims of crime the opportunity to be updated by the police online



How can you get involved or discuss policing concerns?



- Attend events and give us your views face-to-face
- Come along to public meetings and find out more about what we do
- Have your say through online questionnaires, consultations or web chats
- Tell us what your priorities are online through 'Have Your Say'
- Become a Special Constable, a Cadet, Custody Visitor or Volunteer
- Join Rural Watch, Neighbourhood Watch or your local Independent Advisory Group

You can find more information on any of the above and keep up-to-date with all events, meetings and news through the website:

WWW.AVONANDSOMERSET-PCC.GOV.UK

WWW.AVONANDSOMERSET.POLICE.UK

or through social media:

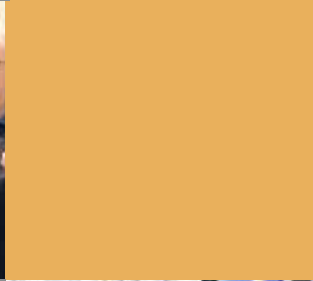


[@AANDSPCC](https://twitter.com/AANDSPCC), [@SUMOUNTSTEVENS](https://twitter.com/SUMOUNTSTEVENS), [@ASPOLICE](https://twitter.com/ASPOLICE)



[/AVONANDSOMERSETPOLICE](https://www.facebook.com/AVONANDSOMERSETPOLICE) /[AANDSPCC](https://www.facebook.com/AANDSPCC)







AVON & SOMERSET POLICE & CRIME COMMISSIONER



Avon and Somerset Police and Crime Commissioner
Police Headquarters, Valley Road, Portishead, BS20 8JJ

Telephone: 01275 816377

Fax: 01275 816388

WWW.AVONANDSOMERSET-PCC.GOV.UK

WWW.AVONANDSOMERSET.POLICE.UK



You can find more details about the Commissioner's Police and Crime Plan for the Avon and Somerset area at www.avonandsomerset-pcc.gov.uk