



**AVON &  
SOMERSET**  
POLICE & CRIME  
COMMISSIONER



**Police and Crime Plan 2014-17**

**SUPPORTING YOU TO  
BE SAFE AND FEEL SAFE**



**SOUTH  
GLOUCESTERSHIRE**



# Welcome to your Police and Crime Plan for South Gloucestershire

## Welcome to your Police and Crime Plan for South Gloucestershire covering the second year of office for the Police and Crime Commissioner.

Police and Crime Commissioner (PCC), Sue Mountstevens, and Area Commander, Chief Superintendent Geoff Spicer, have once again listened to the views of the people of South Gloucestershire and we hope your concerns and priorities for tackling crime in your area are reflected in this plan.

We have been working hard with our partners and voluntary agencies to ensure you are safe and feel safe. Crime is reducing year on year across South Gloucestershire. There are now more than a third fewer crimes than five years ago. Dwelling burglary is down by more than a third over the last four years while violent crime has had the same reduction in the past six years.

Some residents are worried by South Gloucestershire Council's policy of turning off street lights for part of the night. We have been monitoring the effect on crime and have not seen a notable adverse impact. We will continue to monitor the situation and will make representations to the council if we see any adverse effect.

Road safety continues to be of great concern to us and we are determined to reduce the tragic number of deaths on South Gloucestershire's roads. As well as tackling people who drink drive or drive too fast we are working with communities and our partners to identify crash hotspots.

We are building a new custody centre and police station on Gloucester Road in Patchway, which is due to open in spring 2014. This will not affect our patrols of the area and the enquiry office at Filton will transfer to the new Patchway site.

South Gloucestershire is a safe place to live. We would like it to be safer and feel safer. This plan has come from listening to the people and communities of South Gloucestershire. It is not set in stone. It will change as new priorities emerge. Please keep talking to us. We want to hear from you and would encourage you to provide us with your feedback as we go forward. By working together we can make a difference.



*Sue Mountstevens*

**Sue Mountstevens**

Avon and Somerset Police  
and Crime Commissioner



*Geoff Spicer*

**Geoff Spicer**

Area Commander  
Chief Superintendent



# The Police and Crime Commissioner's commitment to you

You have a right to **BE SAFE** and **FEEL SAFE** in your community. It is my aim to ensure that this is the case and that the people of South Gloucestershire have the highest level of trust and confidence in their Police, Community Safety and Criminal Justice services. My priorities are to:-

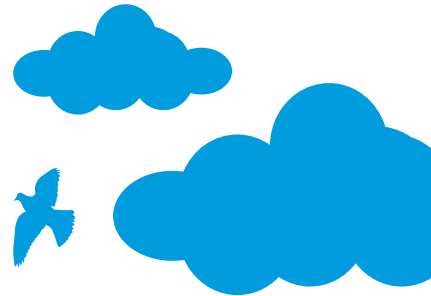
- Reduce the impact that anti-social behaviour has in our communities
- Prevent and reduce burglary and fear of burglary in your area
- Tackle domestic and sexual abuse, particularly towards women and children
- Ensure victims are at the heart of the criminal justice system

## I am also committed to:

- Increasing transparency, accountability and confidence in the police
- Connecting the police with local people, particularly young people
- Working in partnership to tackle local issues of concern, such as road safety
- Early intervention and prevention
- Better co-ordination and integration of local services

## Our promise to you...

- We will respond to your requests for service in an appropriate way
- You will have access to Avon & Somerset Police Services 24 hours a day, 365 days a year
- We will treat you professionally with fairness and respect
- We will tackle issues that matter most to you
- We will endeavour to prevent crime and protect you from criminals
- We will keep you informed and updated



# Our work in

## Victims: We are developing more joined up victim services that have the voice of victims at their heart

We continue to invest in TrackMyCrime – a modern online system that keeps victims informed in real time about how the police are progressing their case. This ground breaking service has been in use since 2010 and has set Avon and Somerset Constabulary ahead in terms of victim care.

We will continue to promote initiatives such as [www.immobilise.com](http://www.immobilise.com) where officers can register people's property and the use of tracking software on mobile phones and computers. These initiatives were successful in helping us to track and recover property stolen in Emersons Green in the last year and resulted in the burglar being jailed for 10 months.

Our trained carpenters visit the homes of vulnerable victims of crime as part of the 'Safer Homes' scheme and provide advice on security issues and fit locks, bolts, chains and other security features free of charge where necessary. Our officers also regularly visit senior citizen's groups in the area to warn them about the tactics used by doorstep criminals who persuade them to have unnecessary work done, overcharge them or simply talk their way inside to steal.

Motorists have been offered free tamperproof screws to prevent number plate theft in South Gloucestershire and the chance to have their catalytic converter etched to deter thieves from stealing them for their metal content.

**Victims at the heart of the criminal justice system**

## Anti-social behaviour: We are working with partner agencies to better protect vulnerable people and tackle the issues affecting your community

We have reduced ASB problems in Kingswood by identifying those responsible and working with other agencies to manage their behaviour. The PCC and police continue to support the Council and voluntary agencies in their efforts to improve the town.

We have been working to address nuisance behaviour caused by young people gathering at Aspects Leisure Centre and the Longwell Green shopping complex – which was identified as a local

concern. We carry out regular patrols and have issued warning letters to parents. One individual was been jailed for 18 weeks after ignoring an Anti-Social Behaviour Order (ASBO) that we issued.

Our 'Families in Focus' scheme is making sure that families most in need get specialist support to find work and ensure children stay in education.

**Anti-social behaviour**

# your area

## Burglary

### **Burglary: We are tackling the causes of burglary and improving our approach to prevention, enforcement and rehabilitation**

We continue to work with and support Neighbourhood Watch members by providing information about incidents in their areas and helping to get new watches off the ground. This has included a new scheme for Cock Road in Kingswood.

When we have caught offenders we work with probation, drug support services and other partners to help them get work, housing or education and prevent them from committing crime again. If offenders continue to offend we make sure they are fast-tracked through the legal system to court.

We work closely with neighbouring police forces to identify crime patterns and share intelligence to help us target nation-wide offenders. Two men

were jailed recently for burglaries in Little Stoke and Winterbourne that were part of a series of offending across the country. We have also carried out operations in Yate, Kingswood and Filton, where officers have conducted high profile patrols to stop and check known burglars and gather local intelligence.

We are encouraging residents to register their belongings at [www.immobilise.com](http://www.immobilise.com) through door-to-door visits and events at shopping centres in Bradley Stoke and Cribbs Causeway. This deters thieves because it helps prove the rightful ownership of property and makes it more likely they will be charged and convicted.

## Domestic and Sexual Abuse

### **Domestic and Sexual Abuse: We are working to increase confidence amongst victims to report abuse and improve the services they receive**

We continue to support and deliver the “Only Yes Means Yes” rape awareness scheme for secondary schools. This helps young people to understand their rights and responsibilities. The scheme was piloted at Castle School in Thornbury before being rolled out across Avon and Somerset.

We have invested in ‘body cams’ – small cameras which are worn on officers’ uniforms. These are being used to record information and evidence at the scene when we attend reports of domestic abuse.

We continue to work with a panel of other agencies to better co-ordinate the way police and partners work together to protect those most at risk of domestic abuse.

The PCC has provided funding so that victims of sexual abuse receive their own specially trained independent advisor to support them.

Work has taken place with the charity ‘Seeds’ who have given presentations to front-line officers to help them support people who have taken the difficult decision to report domestic abuse.



# Local issues and partnership priorities

## Tackling community issues

The Council continues to administer Safer Stronger Community Groups across South Gloucestershire. These forums enable local residents to raise issues of concern, such as speeding traffic, and involve agencies and communities in delivering solutions. You can find out when your next Safer Stronger Community Group meeting is by visiting the South Gloucestershire Council website [www.southglos.gov.uk/](http://www.southglos.gov.uk/)

## Road Safety

Road safety remains one of the most important issues for residents attending our PACT meetings in South Gloucestershire. We continue to work in partnership with local communities to support the roll out of initiatives such as Community Speedwatch by training and supporting the establishment of new groups, providing information where needed and promoting best practice.

## Working in partnership

“ I have seen first-hand how our local police work with the Council, voluntary and community groups to make sure South Gloucestershire remains a safe place. We work together to make sure support is available to people who are suffering from crime and disorder. We can also provide practical support to those who get into trouble and need help to turn their lives around. Working in partnership together, and listening to local people through groups such as Connecting Kingswood and Safer Stronger Community Group meetings, will ensure we keep South Gloucestershire as a great place to live and work. ”

### Councillor Ian Boulton

Chairman of South Gloucestershire Council Labour  
Councillor for Staple Hill



**ROAD**  
**SMART**

New free driving awareness session.

The Road Smart course is available for all drivers but we are especially keen to encourage young drivers to sign up.

[www.roadsmart.org](http://www.roadsmart.org)



# Sue making a difference

**“I continue to feel privileged to be your Police and Crime Commissioner. It is such an incredibly worthwhile job, listening and working with residents to make our communities safer.”**

Sue has doubled the amount of community safety money for South Gloucestershire. This year there will be £152,533 towards cutting crime and keeping people safer.

Just some of the projects include:

- A new support service for victims of hate crime and a dedicated support for anti-social behaviour victims
- A new programme to support women who have experienced domestic abuse
- Two nights of youth outreach work in Yate, Filton and Kingswood

## Commissioner's Community Action Fund

Residents and groups in South Gloucestershire have benefited from over £14,000 to tackle the policing priorities in your area.

Apply today at [www.avonandsomerset-pcc.gov.uk](http://www.avonandsomerset-pcc.gov.uk)



## Sue listens to residents...



Sue has visited Chase and Kings Community Partnership, Survive, Hanham Friday Night Project, Coniston Community Centre, Yate Library, 1625 Independent People, The South Gloucestershire Disability Network, Brent Knoll House Making the Changes and the Community Juice Project.

Sue hosted a PCC Police Public Forum in Kingswood in which residents were invited to ask question and discuss local policing concerns. She has also attended several Safer Strong South Gloucestershire meeting to discuss community safety.

**Southern Brooks Community Partnership receives £2000 working with young people to reduce anti-social behaviour**

**Survive receives £5000 towards the running of a Freedom Programme for female survivors of domestic abuse**

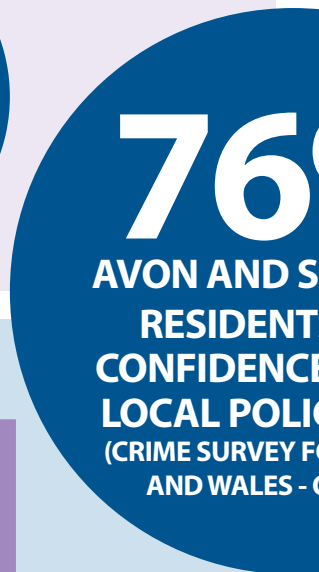
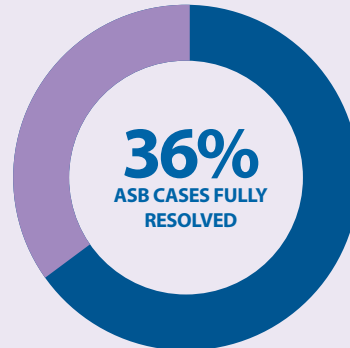
**South Gloucestershire Disability Equality Network receives £1300 to help raise awareness of disablist hate crime and increase**

# Reduce the impact of Anti-Social-Behaviour in your community



We continue to work with South Gloucestershire Council and voluntary agencies to reduce ASB.

We have carried out problem-solving activity in Kingswood and Longwell Green shopping complex.



# Preventing and reducing burglary and the fear of burglary in your area



We have been working with probation, drug support services and other partners to help rehabilitate offenders and prevent re-offending.

We are encouraging local residents to register their belongings on [www.immobilise.com](http://www.immobilise.com)





# Tackling domestic and sexual abuse, particularly towards women and children

**%**  
**OMERSET**  
**S HAVE**  
**E IN THEIR**  
**CE FORCE**  
**OR ENGLAND**  
**OCT 2013)**



We have been raising awareness of sexual offences in secondary schools across South Gloucestershire.

We have worked with a local charity to support our staff in identifying and supporting victims of domestic abuse.

\* While the rate of detections has fallen, the number of detections has increased, reflecting increased levels of reporting.



## Putting victims at the heart of the Criminal Justice System

We have raised awareness of potential doorstep criminals amongst our older residents.

We continue to work with partners to identify vulnerable people and to support them to better secure their property.



# How can you get involved or discuss policing concerns?



- Attend events and give us your views face-to-face
- Come along to public meetings and find out more about what we do
- Have your say through online questionnaires, consultations or web chats
- Tell us what your priorities are online through 'Have Your Say'
- Become a Special Constable, a Cadet, Custody Visitor or Volunteer
- Join Rural Watch, Neighbourhood Watch or your local Independent Advisory Group



You can find more information on any of the above and keep up-to-date with all events, meetings and news through the website:

**[WWW.AVONANDSOMERSET-PCC.GOV.UK](http://WWW.AVONANDSOMERSET-PCC.GOV.UK)**

**[WWW.AVONANDSOMERSET.POLICE.UK](http://WWW.AVONANDSOMERSET.POLICE.UK)**

or through social media:

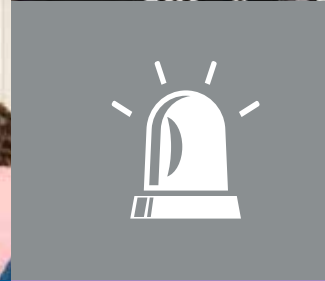


[@AANDSPCC](https://twitter.com/AANDSPCC), [@SUMOUNTSTEVENS](https://twitter.com/SUMOUNTSTEVENS), [@ASPOLICE](https://twitter.com/ASPOLICE)



[/AVONANDSOMERSETPOLICE](https://www.facebook.com/AVONANDSOMERSETPOLICE) /[AANDSPCC](https://www.facebook.com/AANDSPCC)







# AVON & SOMERSET POLICE & CRIME COMMISSIONER



Avon and Somerset Police and Crime Commissioner  
Police Headquarters, Valley Road, Portishead, BS20 8JJ

**Telephone: 01275 816377**

**Fax: 01275 816388**

**WWW.AVONANDSOMERSET-PCC.GOV.UK**

**WWW.AVONANDSOMERSET.POLICE.UK**



You can find more details about the Commissioner's Police and Crime Plan for the Avon and Somerset area at [www.avonandsomerset-pcc.gov.uk](http://www.avonandsomerset-pcc.gov.uk)