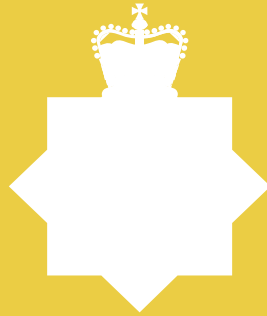


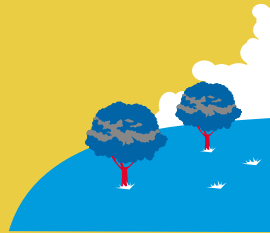


**AVON &  
SOMERSET**  
POLICE & CRIME  
COMMISSIONER



**Police and Crime Plan 2014-17**

**SUPPORTING YOU TO  
BE SAFE AND FEEL SAFE**



**SOUTHERN  
SOMERSET**



# Welcome to your Police and Crime Plan for South Somerset



**Police and Crime Commissioner (PCC), Sue Mountstevens, and Area Commander Chief Superintendent Nikki Watson have listened to the views of the people and communities of South Somerset.**



We hope this plan reflects your concerns and priorities for tackling crime in your community. We will work with our local authority and key partners to help make South Somerset a safe and enjoyable place to live, work and visit.

In the past year we have had success in tackling anti-social behaviour (ASB) - including evicting a nuisance neighbour in Crewkerne, cracking down on street begging in Yeovil and introducing drink banning orders in Castle Cary to prevent alcohol-related crime and public order offences. Burglary across the area is down 28 per cent on the previous year.

We have addressed other important issues including rural crime and speeding. We want to build on these successes and will continue to tackle crime and anti-social behaviour by relentlessly pursuing offenders, providing crime reduction advice to local people and supporting victims of crime.



Due to the financial constraints that have been placed on ourselves and other public services we have found it necessary to re-structure the Constabulary to ensure we are providing an

effective service to local people. While this is the case we want to reassure you that this has not had an impact on the front line delivery of services in your area.

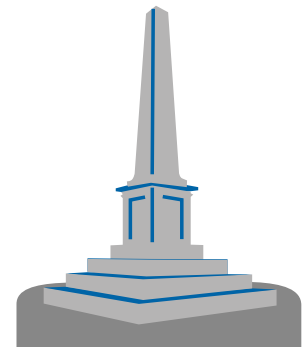
South Somerset is a safe place to live. We would like it to be safer and feel safer. This plan has come from listening to the people and communities of South Somerset. It is not set in stone. It will change as new priorities emerge. Please keep talking to us. We want to hear your concerns, problems and hopefully praise as we go forward. By working together we can make a difference.



*Sue Mountstevens*  
**Sue Mountstevens**  
Avon and Somerset Police  
and Crime Commissioner



*N. Watson*  
**Nikki Watson**  
Area Commander  
Somerset



# The Police and Crime Commissioner's commitment to you

You have a right to **BE SAFE** and **FEEL SAFE** in your community. It is my aim to ensure that this is the case and that the people of South Somerset have the highest level of trust and confidence in their Police, Community Safety and Criminal Justice services. My priorities are to:-

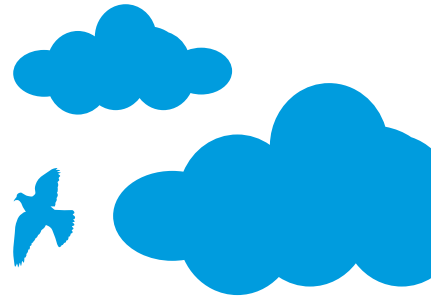
- Reduce the impact that anti-social behaviour has in our communities
- Prevent and reduce burglary and fear of burglary in your area
- Tackle domestic and sexual abuse, particularly towards women and children
- Ensure victims are at the heart of the criminal justice system

## I am also committed to:

- Increasing transparency, accountability and confidence in the police
- Connecting the police with local people, particularly young people
- Working in partnership to tackle local issues of concern, such as road safety
- Early intervention and prevention
- Better co-ordination and integration of local services

## Our promise to you...

- We will respond to your requests for service in an appropriate way
- You will have access to Avon & Somerset Police Services 24 hours a day, 365 days a year
- We will treat you professionally with fairness and respect
- We will tackle issues that matter most to you
- We will endeavour to prevent crime and protect you from criminals
- We will keep you informed and updated



# Our work in

## Victims: We are developing more joined up victim services that have the voice of victims at their heart

The PCC will commission local services to support victims, bringing together existing good practice and ensuring victims have access to support regardless of whether they have reported to the police. Read more on the PCC website.

We continue to invest in TrackMyCrime – a modern online system that keeps victims informed in real time about how the police are progressing their case. This ground breaking service has been in use since 2010 and has set Avon and Somerset Constabulary ahead in terms of victim care.

Our trained carpenters visit the homes of vulnerable victims of crime as part of the 'Safer Homes' scheme. The carpenters provide advice on security issues and where necessary, fit locks, bolts, chains and other security features free of charge.

We continue to make effective and appropriate use of restorative justice through the use of the local Community Justice Panel in Yeovil and surrounding towns which is run and conducted by volunteers.

**Victims at the heart of the criminal justice system**

## Anti-social behaviour: We are working with partner agencies to better protect vulnerable people and tackle the issues affecting your community

In the last year, we have worked closely with the housing provider to successfully evict problem tenants who were affecting the residents of Matthews Road, Yeovil and Banking Court, Crewkerne.

There has also been a crackdown on street beggars which has resulted in a number of positive outcomes. This included working in partnership to secure an Anti-social Behaviour Order (ASBO) for a persistent offender who was impacting upon our business community.

We have used Drink Banning Orders for the first time in South Somerset to prevent alcohol-related criminal damage and public order offences in Castle Cary. We also continue to work with partners such as the Street Pastors and Royal Navy to tackle late night ASB in Yeovil town centre.

We have secured funding to support youth clubs in Chard, Ilminster and Crewkerne to provide a safe place for young people and reduce their risk of becoming involved in ASB.

**Anti-social behaviour**

# your area

## Burglary

### **Burglary: We are tackling the causes of burglary and improving our approach to prevention, enforcement and rehabilitation**

We have held rural crime events held at Castle Cary and Yeovil and re-invigorated the 'Sheduction' non-dwelling burglary initiative which we continue to deliver to groups and events across the area.

Following intelligence and scientific work, the Yeovil targeting team arrested a Yeovil offender and associate for a series of burglaries committed over a large area of Somerset. They admitted the offences and also admitted to taking cars in order to facilitate the burglaries.

One of our local PCSOs works with volunteers patrolling farm land at night and marking property. We are also working with partners including the NFU and with adjoining forces to tackle traveling criminals.

## Domestic and Sexual Abuse

### **Domestic and Sexual Abuse: We are working to increase confidence amongst victims to report abuse and improve the services they receive**

The PCC has allocated funding for the Independent Sexual Violence Advisor Service (ISVAs), which reaches out to the community and ensures that each of the most vulnerable survivors of sexual abuse has their own specially-trained advisor to support them.

We continue to support "Only Yes Means Yes" training, which has been delivered to various schools and Yeovil College. This provides young people with advice and guidance on sexual offences, looking in particular at the issue of consent, rape and sexual assault. A police post has been set up and links have been developed with Yeovil College who supply students to help staff the post.

Police Community Support Officers (PCSOs) will be trained to provide Child Exploitation On-line Protection advice to young people.



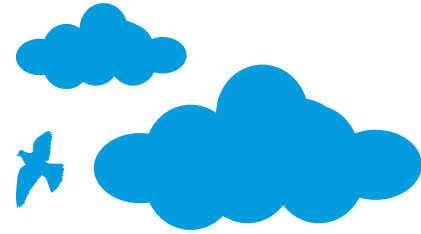
# Local issues and partnership priorities

## Rural Crime and Farm Watch

The police work closely with the National Farmers Union and individual landowners to promote the Farm Watch scheme. Members of the free scheme receive signs to show they are part of Farm Watch and text message alerts about farm-related crime and suspicious activity. The scheme includes free property marking by police officers and the opportunity to register five high-value items on The National Plant and Equipment Register.

“**Farm Watch is really quite reassuring. We get texts and information, my farm equipment is now all security-tagged and the buildings alarmed, and the farming community is working together to help each other out. It’s good to see the police on the farm and to see that they’re taking this seriously.**”

**Somerset resident David White**



## Speeding Traffic

Speedwatch throughout South Somerset goes from strength to strength with the regular commitment of the volunteers. Schemes are supported by the local neighbourhood teams and roads policing units and have recently helped prosecute a particularly problematic offender in Stoke sub Hamdon who had been boasting of his speeding on the internet.

“**The scheme allows communities to take control of their roads and relies on volunteers and local engagement to help motorists to reduce their speed.**”

**Matt Ayres, Head of the Roads Policing Unit Superintendent**

**ROAD SMART**

New free driving awareness session.

The Road Smart course is available for all drivers but we are especially keen to encourage young drivers to sign up.

[www.roadsmart.org](http://www.roadsmart.org)



# Sue making a difference

**“I continue to feel privileged to be your Police and Crime Commissioner. It is such an incredibly worthwhile job, listening and working with residents to make our communities safer.”**

Sue has doubled the amount of community safety money for Somerset. This year there will be £357,000 towards cutting crime and keeping people safer.

Just some of the projects include:

- A new community restorative justice panel
- An anti-social behaviour support service
- Introducing Independent Domestic Violence Advisor service to Somerset hospitals

## Commissioner’s Community Action Fund

Sue has launched the Commissioner’s Community Action Fund where you can apply for up to £5,000 for your community.

**On a daily basis I experience the extraordinary work taking place within local communities and my Community Action Fund is there to provide projects with some additional support.**

## Sue Mountstevens

Apply today at [www.avonandsomerset-pcc.gov.uk](http://www.avonandsomerset-pcc.gov.uk)

Sue approved a new county-wide community safety partnership to reduce crime, disorder and anti-social behaviour in Somerset. The Safer Somerset Partnership will bring together Mendip and South Somerset Community Safety Partnership, the Safer Sedgemoor Partnership, Taunton Deane Community Safety Partnership and West Somerset Crime and Disorder Partnership to provide a more coordinated approach to tackling crime in the county.

## Sue listens to residents...



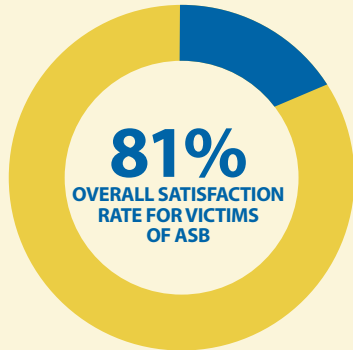
Sue dedicates one-day a week to the community and has visited Muchelney, Yeovil and Chard, and met with the South Somerset Muslim and Cultural Association, Chard’s Eleos Café for a public drop-in and Chard Young People’s Centre, to name a few.

**Archies Xtra receives £1110.76 to support a project which works with young people in Langport, providing mentoring and support**

**The Independent Sexual Violence Advisor Service continues to support and empower victims of sexual violence**

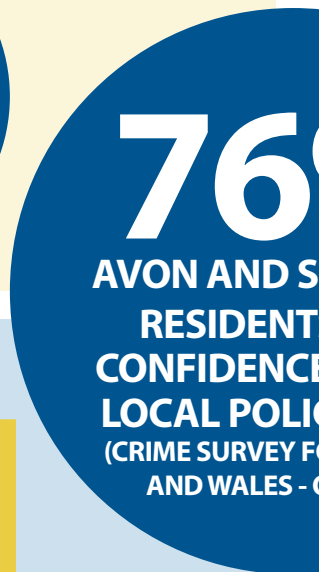
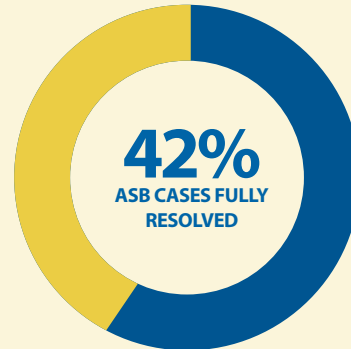
**Our Drug and Alcohol Arrest Referral services are working to tackle the drivers of drug and alcohol-related crime**

# Reduce the impact of Anti-Social-Behaviour in your community



We have been working to identify key areas of our service to victims which we could improve upon and improving our communication with those affected.

Identifying hot spot areas, including those within the Night Time Economy is really helping us to focus our resources in the right way.



# Preventing and reducing burglary and the fear of burglary in your area



We have been encouraging the public to register their property on [www.immobilise.com](http://www.immobilise.com)

We introduced 'No Cold Calling' zones in order to reduce opportunistic doorstep criminals.





# Tackling domestic and sexual abuse, particularly towards women and children



We have visited schools and academies across the area to raise awareness about sexual offences, in particular raising the profile of the "Only Yes Means Yes" campaign.



\* While the rate of detections has fallen, the number of detections has increased marginally.

**%**  
SOMERSET  
S HAVE  
E IN THEIR  
CE FORCE  
OR ENGLAND  
OCT 2013)



## Putting victims at the heart of the Criminal Justice System

We have introduced a 'Safe Places' scheme which provides a safe place for vulnerable victims to go to. Just look for the logo.

"Track my Crime" gives all victims of crime the opportunity to be updated by the police online.



# How can you get involved or discuss policing concerns?



- Attend events and give us your views face-to-face
- Come along to public meetings and find out more about what we do
- Have your say through online questionnaires, consultations or web chats
- Tell us what your priorities are online through 'Have Your Say'
- Become a Special Constable, a Cadet, Custody Visitor or Volunteer
- Join Rural Watch, Neighbourhood Watch or your local Independent Advisory Group

You can find more information on any of the above and keep up-to-date with all events, meetings and news through the website:

**[WWW.AVONANDSOMERSET-PCC.GOV.UK](http://WWW.AVONANDSOMERSET-PCC.GOV.UK)**

**[WWW.AVONANDSOMERSET.POLICE.UK](http://WWW.AVONANDSOMERSET.POLICE.UK)**

or through social media:

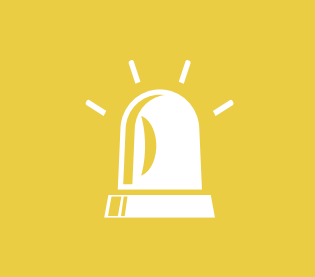


[@AANDSPCC](https://twitter.com/AANDSPCC), [@SUMOUNTSTEVENS](https://twitter.com/SUMOUNTSTEVENS), [@ASPOLICE](https://twitter.com/ASPOLICE)



[/AVONANDSOMERSETPOLICE](https://www.facebook.com/AVONANDSOMERSETPOLICE) /[AANDSPCC](https://www.facebook.com/AANDSPCC)







# AVON & SOMERSET POLICE & CRIME COMMISSIONER

Avon and Somerset Police and Crime Commissioner  
Police Headquarters, Valley Road, Portishead, BS20 8JJ

**Telephone: 01275 816377**

**Fax: 01275 816388**

**[WWW.AVONANDSOMERSET-PCC.GOV.UK](http://WWW.AVONANDSOMERSET-PCC.GOV.UK)**

**[WWW.AVONANDSOMERSET.POLICE.UK](http://WWW.AVONANDSOMERSET.POLICE.UK)**



You can find more details about the Commissioner's Police and Crime Plan  
for the Avon and Somerset area at [www.avonandsomerset-pcc.gov.uk](http://www.avonandsomerset-pcc.gov.uk)