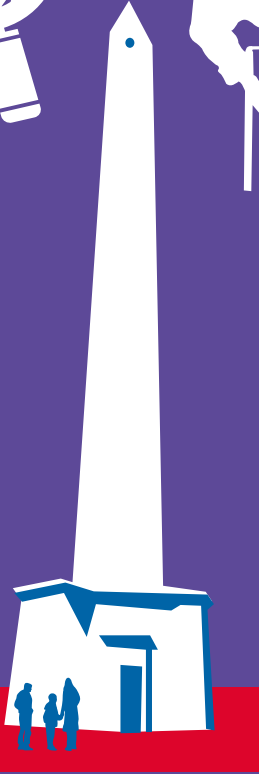




**AVON &
SOMERSET**
POLICE & CRIME
COMMISSIONER



DEAN TAUNTON

Police and Crime Plan 2014-17

**SUPPORTING YOU TO
BE SAFE AND FEEL SAFE**

Welcome to your Police and Crime Plan for Taunton Deane

Police and Crime Commissioner (PCC), Sue Mountstevens, and Area Commander Chief Superintendent Nikki Watson have listened to the views of the people and communities from Taunton and the surrounding area.

We hope this plan reflects your concerns and priorities for tackling crime in your community. We will work with our local authority and key partners to help make Taunton Deane a safe and enjoyable place to live, work and visit.

In the past year we have had success in tackling drug crime and anti-social behaviour (ASB) and reduced burglary. We have also addressed important issues such as rural crime, metal theft, commercial burglary and domestic abuse.

We want to build on these successes and will continue to tackle crime and ASB by relentlessly pursuing offenders, providing crime reduction advice and supporting victims of crime.

Due to the financial constraints that have been placed on us and other public services we have found it necessary to re-structure the Constabulary to ensure we are providing an effective service to residents. However, we want to reassure you that this has not had an impact on the front line delivery of services in your area.

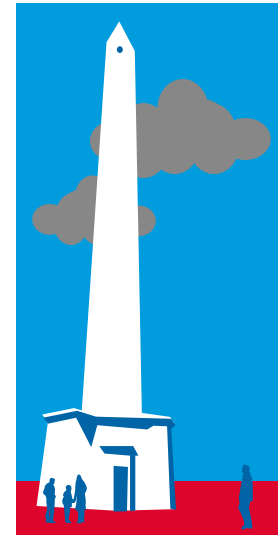
The Taunton Deane area is a safe place to live. We would like it to be safer and feel safer. This plan has come from listening to residents and our local communities. It is not set in stone. It will change as new priorities emerge. Please keep talking to us. We want to hear your concerns, problems and hopefully praise as we go forward. By working together we can make a difference.



Sue Mountstevens
Sue Mountstevens
Avon and Somerset Police
and Crime Commissioner



N. Watson
Nikki Watson
Area Commander
Somerset



The Police and Crime Commissioner's commitment to you

You have a right to **BE SAFE** and **FEEL SAFE** in your community. It is my aim to ensure that this is the case and that the people of Taunton Deane have the highest level of trust and confidence in their Police, Community Safety and Criminal Justice services. My priorities are to:-

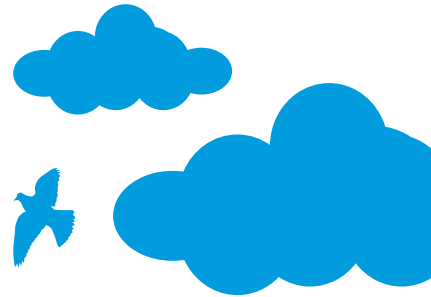
- Reduce the impact that anti-social behaviour has in our communities
- Prevent and reduce burglary and fear of burglary in your area
- Tackle domestic and sexual abuse, particularly towards women and children
- Ensure victims are at the heart of the criminal justice system

I am also committed to:

- Increasing transparency, accountability and confidence in the police
- Connecting the police with local people, particularly young people
- Working in partnership to tackle local issues of concern, such as road safety
- Early intervention and prevention
- Better co-ordination and integration of local services

Our promise to you...

- We will respond to your requests for service in an appropriate way
- You will have access to Avon & Somerset Police Services 24 hours a day, 365 days a year
- We will treat you professionally with fairness and respect
- We will tackle issues that matter most to you
- We will endeavour to prevent crime and protect you from criminals
- We will keep you informed and updated



Our work in

Victims: We are developing more joined up victim services that have the voice of victims at their heart

The PCC will commission local services to support victims, bringing together existing good practice and ensuring victims have access to support regardless of whether they have reported to the police. Read more on the PCC website

We continue to invest in TrackMyCrime – a modern online system that keeps victims informed in real time about how the police are progressing their case. This ground breaking service has been in use since 2010 and has set Avon and Somerset Constabulary ahead in terms of victim care.

Our trained carpenters visit the homes of vulnerable victims of crime as part of the 'Safer Homes' scheme. The carpenters provide advice on security issues and where necessary, fit locks, bolts, chains and other security features free of charge. Positive feedback and low repeat victimisation rates indicate that the scheme continues to be effective in reducing fear and risk of victimisation.

Victims at the heart of the criminal justice system

Anti-social behaviour: We are working with partner agencies to better protect vulnerable people and tackle the issues affecting your community

Tackling drink and drug-related offending remains a priority for the Town Centre. We continue to work with partner agencies to provide hi visibility and plain clothes patrols, support drug testing at licensed premises and enforce restrictions on street drinking via the Anti-Social Behaviour Orders we have obtained.

There has been a significant reduction in crime and anti-social behaviour as well as increased reporting and confidence on the Halcon estate through partnership and local communities working together.

Working with the community, we have successfully obtained for several Crack House Closure Orders to stop drug crime and related anti-social behaviour at several locations in Taunton. We also obtained a Premises Closure Order for a property in Liseaux Way to stop anti-social and nuisance behaviour, and the extension of a Crack House Closure Order at School Way, Monkton Heathfield.

Anti-social behaviour

your area

Burglary

Burglary: We are tackling the causes of burglary and improving our approach to prevention, enforcement and rehabilitation

Our Safer Stronger Neighbourhood Team in Wellington continue to promote Horse Watch - an initiative linked to Farm Watch - which provides opportunities to provide crime prevention advice and property marking.

We continue to work with colleagues in Devon and Cornwall to prevent and raise awareness of rural crime.

We will continue to develop and promote initiatives such as www.immobilise.com where officers can register people's property and the use of tracking software on mobile phones and computers. These initiatives have proved successful in identifying offenders and recovering stolen property, including for example, a recent series of burglaries in Wellington.

Domestic and Sexual Abuse

Domestic and Sexual Abuse: We are working to increase confidence amongst victims to report abuse and improve the services they receive

The PCC has allocated funding for the Independent Sexual Violence Advisor Service (ISVAs), which reaches out to the community and gives specialist support. This also ensures that each of the most vulnerable survivors of sexual abuse has their own specially-trained advisor to support them.

Seven Police Community Support Officers (PCSOs) have recently been trained to provide advice to young people regarding their safety when on-line to prevent child exploitation. Training will be rolled out across Somerset to train further staff.

The police work closely with a panel of other agencies to co-ordinate the way they work together to protect people who are most at risk of domestic abuse. The Taunton Deane Domestic Abuse Forum - a district council level and multi-agency domestic abuse forum - is working well and receives strong support from the police and other partner agencies.



Local issues and partnership priorities

Working in Partnership

The multi-agency Halcon One Team has been recognised nationally via a policing and problem solving awards scheme. The project was set up on the Halcon Estate five years ago to reduce crime and anti-social behaviour, increase confidence to report incidents and to support vulnerable victims of crimes such as domestic abuse. So far, recorded crime has fallen by 28%, the number of young people suspected of crime has fallen by 46% and the number of young victims of crime has fallen by 53%.

“It is tremendous news that the Halcon Project has been named as the top campaign. This is just reward for all the hard work that has gone into this exciting and ground-breaking partnership project.”

Leader of Taunton Deane Borough Council,
Cllr John Williams

Speeding Traffic

Road safety remains one of the most important issues for residents attending our “Have your say” meetings in Taunton Deane. We continue to work in partnership with local communities to support the roll out of initiatives such as Community Speedwatch.

While community Speed watch is strong in some areas, there are many opportunities to support other concerned communities. Our aim is to train and support new groups, provide them with the information they need and support communication between groups to exchange information and promote best practice.

“The scheme allows communities to take control of their roads and relies on volunteers and local engagement to help motorists to reduce their speed.”

Matt Ayres
Head of the Roads Policing Unit Superintendent

New free driving awareness session.

The Road Smart course is available for all drivers but we are especially keen to encourage young drivers to sign up.

www.roadsmart.org



**ROAD
SMART**

Volunteers needed to run Community Speed Watch in Taunton Deane



Sign up for Farm Watch and receive early warnings and advice



Sue making a difference

“I continue to feel privileged to be your Police and Crime Commissioner. It is such an incredibly worthwhile job, listening and working with residents to make our communities safer.”

Sue has doubled the amount of community safety money for Somerset. This year there will be £357,000 towards cutting crime and keeping people safer.

Just some of the projects include:

- The Greenways project supporting young people and families in Rockwell Green and Westford Grange
- An anti-social behaviour support service
- Introducing Independent Domestic Violence Advisor service in Musgrove Park Hospital

Commissioner’s Community Action Fund

Sue has launched the Commissioner’s Community Action Fund where you can apply for up to £5,000 for your community.

“On a daily basis I experience the extraordinary work taking place within local communities and my Community Action Fund is there to provide projects with some additional support.”

Sue Mountstevens

Apply today at www.avonandsomerset-pcc.gov.uk

Sue listens to residents...



Sue has visited Somerset College, Wellspring Leisure Centre, on patrol in Vivary Park, 10 CY and RSPCA West Hatch.

Sue approved a new county wide community safety partnership to reduce crime, disorder and anti-social behaviour in Somerset.

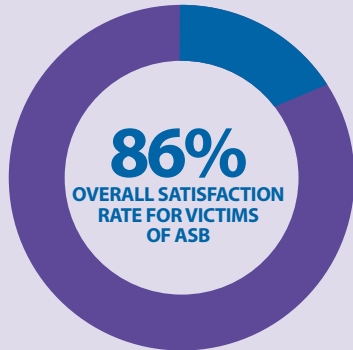
The Safer Somerset Partnership brings together the Mendip and South Somerset and Taunton Deane Community Safety Partnerships, the Safer Sedgemoor Partnership and the West Somerset Crime and Disorder Partnership to provide a more joined up approach to tackling crime.

10 CY (Communities Youth) receives £4600 to support a mobile youth outreach service for the rural area surrounding Wiveliscombe.

Revive Youth Community Interest Company receives £1000 empowering young people to regenerate a green space to reduce anti-social behaviour.

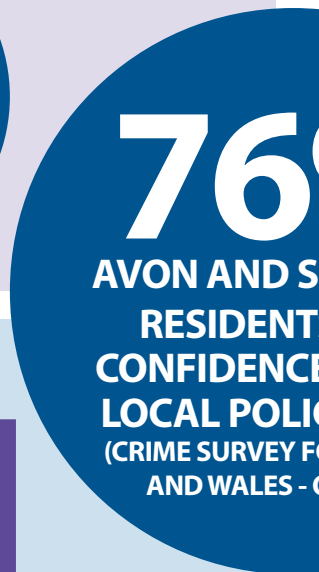
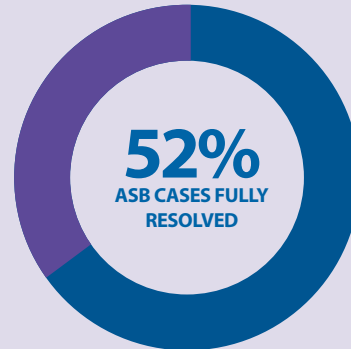
Taunton Women’s Aid receives £4641.20 for a weekly women’s support group as part of the Halcon 1 Team project for victims of domestic abuse.

Reduce the impact of Anti-Social-Behaviour in your community



We have been improving our communication with victims and our ASB services more generally.

Identifying hot spot areas, including those within the Night Time Economy is really helping us to focus our resources in the right way.



Preventing and reducing burglary and the fear of burglary in your area



We have been encouraging the public to register their property on www.immobilise.com

We have introduced 'no cold calling' zones in order to reduce opportunistic doorstep criminals



Tackling domestic and sexual abuse, particularly towards women and children

+3%

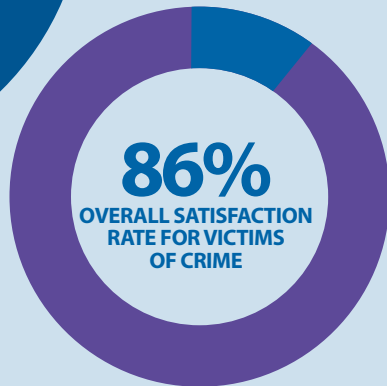
REPORTED DOMESTIC
ABUSE AND SERIOUS
SEXUAL OFFENCES

We have visited schools and academies across the area to raise awareness about sexual offences, in particular raising the profile of the "Only Yes Means Yes" campaign.

SERIOUS SEXUAL
OFFENCES DETECTION
RATE

**+6%PTS to
30%**

%
SOMERSET
S HAVE
E IN THEIR
CE FORCE
OR ENGLAND
OCT 2013)



Putting victims at the heart of the Criminal Justice System

We have introduced a 'Safe Places' scheme which provides a safe place for vulnerable victims to go to. Just look for the logo.

"Track my Crime" gives all victims of crime the opportunity to be updated by the police online.



How can you get involved or discuss policing concerns?



- Attend events and give us your views face-to-face
- Come along to public meetings and find out more about what we do
- Have your say through online questionnaires, consultations or web chats
- Tell us what your priorities are online through 'Have Your Say'
- Become a Special Constable, a Cadet, Custody Visitor or Volunteer
- Join Rural Watch, Neighbourhood Watch or your local Independent Advisory Group



You can find more information on any of the above and keep up-to-date with all events, meetings and news through the website:

WWW.AVONANDSOMERSET-PCC.GOV.UK

WWW.AVONANDSOMERSET.POLICE.UK

or through social media:



[@AANDSPCC](https://twitter.com/AANDSPCC), [@SUMOUNTSTEVENS](https://twitter.com/SUMOUNTSTEVENS), [@ASPOLICE](https://twitter.com/ASPOLICE)



[/AVONANDSOMERSETPOLICE/AANDSPCC](https://www.facebook.com/AVONANDSOMERSETPOLICE/AANDSPCC)







AVON & SOMERSET POLICE & CRIME COMMISSIONER



Avon and Somerset Police and Crime Commissioner
Police Headquarters, Valley Road, Portishead, BS20 8JJ

Telephone: 01275 816377

Fax: 01275 816388

WWW.AVONANDSOMERSET-PCC.GOV.UK

WWW.AVONANDSOMERSET.POLICE.UK



You can find more details about the Commissioner's Police and Crime Plan for the Avon and Somerset area at www.avonandsomerset-pcc.gov.uk