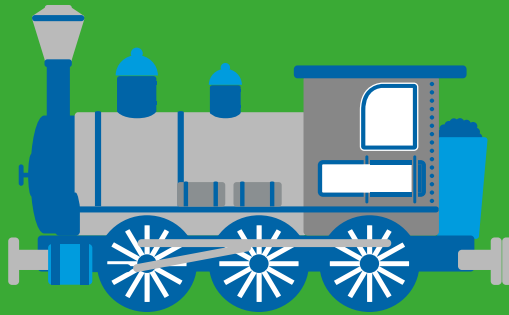




**AVON &
SOMERSET**
POLICE & CRIME
COMMISSIONER



THE
COASTAL PATH

Police and Crime Plan 2014-17

**SUPPORTING YOU TO
BE SAFE AND FEEL SAFE**

**WEST
SOMERSET**

Welcome to your Police and Crime Plan for West Somerset

Police and Crime Commissioner (PCC) Sue Mountstevens, and Area Commander Chief Superintendent Nikki Watson have listened to the views of the people and communities from West Somerset.

We hope this plan reflects your concerns and priorities for tackling crime in your community. We will work with our local authority and key partners to help make West Somerset a safe and enjoyable place to live, work and visit.

In the past year we have had success in tackling drug crime, anti-social behaviour (ASB) and reduced burglary by 56%. We have also helped families whose members were involved in anti-social behaviour or repeat crime to address the causes of the problems and break their cycle of offending.

We want to build on these successes and will continue to tackle crime and anti-social behaviour by relentlessly pursuing offenders, providing crime reduction advice and supporting victims of crime.

Due to the financial constraints that have been placed on us and other public services we have found it necessary to re-structure the Constabulary to ensure we are providing an effective service to local people. However, we want to reassure you that this has not had an impact on the front line delivery of services in your area.

West Somerset is a safe place to live. We would like it to be safer and feel safer. This plan has come from listening to residents and our local communities. It is not set in stone. It will change as new priorities emerge. Please keep talking to us. We want to hear your concerns, problems and hopefully praise as we go forward.

By working together we can make a difference.



Sue Mountstevens

Sue Mountstevens

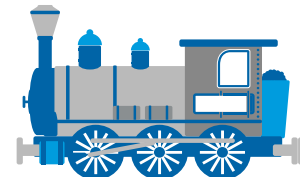
Avon and Somerset Police
and Crime Commissioner



N. Watson

Nikki Watson

Area Commander
Somerset



The Police and Crime Commissioner's commitment to you

You have a right to **BE SAFE** and **FEEL SAFE** in your community. It is my aim to ensure that this is the case and that the people of West Somerset have the highest level of trust and confidence in their Police, Community Safety and Criminal Justice services. My priorities are to:-

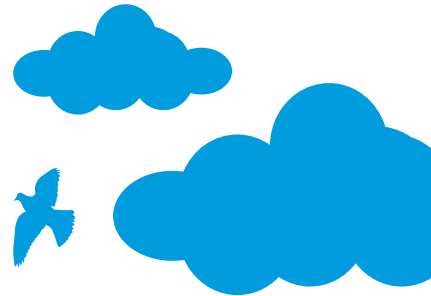
- Reduce the impact that anti-social behaviour has in our communities
- Prevent and reduce burglary and fear of burglary in your area
- Tackle domestic and sexual abuse, particularly towards women and children
- Ensure victims are at the heart of the criminal justice system

I am also committed to:

- Increasing transparency, accountability and confidence in the police
- Connecting the police with local people, particularly young people
- Working in partnership to tackle local issues of concern, such as road safety
- Early intervention and prevention
- Better co-ordination and integration of local services

Our promise to you...

- We will respond to your requests for service in an appropriate way
- You will have access to Avon & Somerset Police Services 24 hours a day, 365 days a year
- We will treat you professionally with fairness and respect
- We will tackle issues that matter most to you
- We will endeavour to prevent crime and protect you from criminals
- We will keep you informed and updated



Our work in

Victims: We are developing more joined up victim services that have the voice of victims at their heart

The PCC will commission local services to support victims, bringing together existing good practice and ensuring victims have access to support regardless of whether they have reported to the police. Read more on the PCC website.

Victim satisfaction levels amongst victims of crime and ASB have risen to over 93% in the last year, with Somerset West maintaining the highest level of victim satisfaction across Avon and Somerset.

We continue to invest in TrackMyCrime – a modern online system that keeps victims informed in real time about how the police are progressing their case. This ground breaking service and has set us ahead in terms of victim care.

We continue to actively support the work of a Hate Crime forum led by West Somerset Council, and continue to attend Safeguarding team meetings with local health care professionals to tackle local issue and reduce the risk of harm.

Victims at the heart of the criminal justice system

Anti-social behaviour: We are working with partner agencies to better protect vulnerable people and tackle the issues affecting your community

We will continue to deliver improvements in the way we work together to tackle ASB, particularly through our multi-agency Anti-Social Behaviour Steering Group, which is chaired by the local Inspector, and local Community Safety Partnership meetings.

We now have volunteers monitoring the CCTV cameras in Minehead. West Somerset Council have contributed and sourced part-funding from the Police and Crime Commissioner to support CCTV in Watchet in partnership with Watchet Town Council. Police community safety and mental health partners

have been successful in securing an Anti-Social Behaviour Order (ASBO) against a resident of Wheddon Cross who had caused hundreds of thousands of pounds worth of criminal damage.

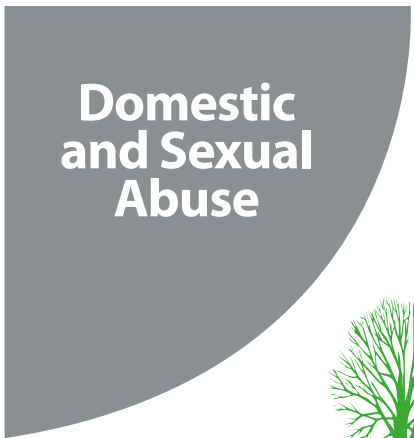
We continue to work with partners to develop shared solutions to long term community issues and protect vulnerable people through our multi-agency ASB Steering Group.

Anti-social behaviour

your area



Burglary



Domestic and Sexual Abuse



Burglary: We are tackling the causes of burglary and improving our approach to prevention, enforcement and rehabilitation

Our focus on tackling and preventing burglary in Somerset West has helped to achieve a 56% reduction in offences committed in the last year.

A new specialist 'Sector Targeting' team has been set up in Minehead to tackle and pursue known offenders, and improve our response to local burglaries.

Our trained carpenters visit the homes of vulnerable victims of crime as part of the 'Safer Homes' scheme. The carpenters provide advice on security issues and where necessary, fit locks, bolts, chains and other security features free of charge.

We will continue to develop and promote initiatives such as www.immobilise.com where officers can register people's property and the use of tracking software on mobile phones and computers. These initiatives have proved successful in returning stolen property to owners and identifying offenders.

Domestic and Sexual Abuse: We are working to increase confidence amongst victims to report abuse and improve the services they receive

We will continue to support the Domestic Violence Forum, as a district council level multi-agency forum that supports work to tackle abuse in the area. This is led by the Community Safety Officer for West Somerset Council.

The PCC has allocated funding for the Independent Sexual Violence Advisor Service (ISVAs), gives specialist support and intervention to reduce the risk of serious harm to adults and children and ensures that victims of sexual abuse have their own specially-trained advisor to support them.

Seven Police Community Support Officers (PCSOs) have been trained to provide advice to young people regarding their safety when on-line to prevent child exploitation. Training will be rolled out across Somerset to train further staff.

The local neighbourhood beat team continues to hold weekly beat surgeries at West Somerset College and Danesfield school to engage with young people.

Local issues and partnership priorities

Proactive Team

A designated, proactive team has been set up in Minehead to provide a quick response team to information received from local people about priority crime such as drug offences and burglary. The team, is able to respond quickly to obtain search warrants or set-up operations and investigations across West Somerset.

The team has executed Misuse of Drugs Act warrants, seizing heroine, cannabis and cash.

We encourage anyone with information about suspected crime in their neighbourhood to contact us. We do listen and we do act. You are our eyes and ears, so please keep talking to us.

PC Alex Stanbury

Alcohol-related ASB

In 2012, local holiday resort, Butlins, came on board to work with the police in tackling alcohol-related anti-social behaviour in Minehead. They funded additional police officers throughout 2013 to be on duty over their busy weekends.

Whilst figures show there is no rise in crime during these weekends, some residents can feel intimidated and put off visiting the town centre due to alcohol-related anti-social behaviour in the pubs and bars.

The partnership works well and shows how effective it can be working with the local authority, other emergency services, local businesses and the community to tackle crime and anti-social behaviour.

Road Safety

Road safety remains one of the most important issues for residents attending our "Have your say" meetings in West Somerset. We continue to work in partnership with local communities to support the roll out of initiatives such as Community Speedwatch by training and supporting the establishment of new groups, providing information where needed and promoting best practice.

The scheme allows communities to take control of their roads and relies on volunteers and local engagement to help motorists to reduce their speed.

Matt Ayres, Head of the Roads Policing Unit Superintendent



Sue making a difference

“I continue to feel privileged to be your Police and Crime Commissioner. It is such an incredibly worthwhile job, listening and working with residents to make our communities safer.”

Sue has doubled the amount of community safety money for Somerset. This year there will be £357,000 towards cutting crime and keeping people safer.

Just some of the projects include:

- A new community restorative justice panel
- An anti-social behaviour support service
- Introducing Independent Domestic Violence Advisor service to Somerset hospitals

Commissioner's Community Action Fund

Sue has launched the Commissioner's Community Action Fund where you can apply for up to £5,000 for your community.

Sue approved a new county-wide community safety partnership to reduce crime, disorder and anti-social behaviour in Somerset. This brings together the Mendip and South Somerset and Taunton Deane Community Safety Partnerships, the Safer Sedgemoor Partnership and the West Somerset Crime and Disorder Partnership to provide a more joined up approach to tackling crime.

“On a daily basis I experience the extraordinary work taking place within local communities and my Community Action Fund is there to provide projects with some additional support.”

Sue Mountstevens

Apply today at www.avonandsomerset-pcc.gov.uk



Sue has visited the Minehead Customer Contact Centre and Minehead Festival as well amongst other events and initiatives in your area.

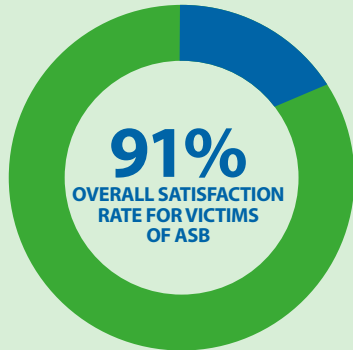
Sue hosted a PCC Police Public Forum in Minehead where residents were invited to attend and to ask questions and discuss local policing concerns.

The Commissioner's Community Action Fund - Residents and groups in Somerset received over £21,000 to tackle policing priorities in their area

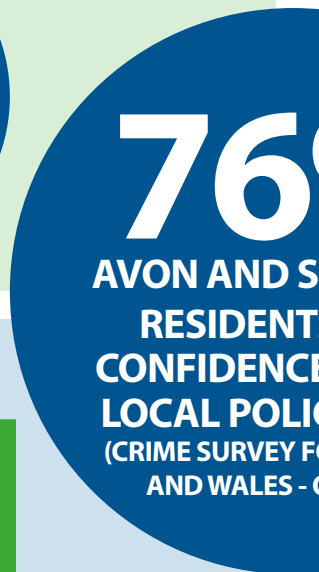
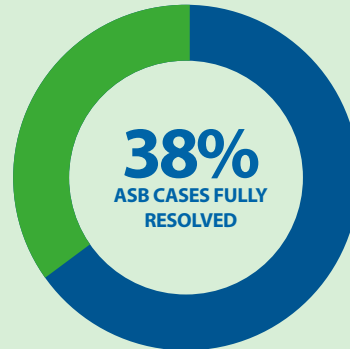
Senior Citizen Liaison Team receives £1,000 towards awareness of doorstep burglaries amongst older people

The Minehead Hope Centre Trust receives £4111.99 for a preventative project working with young people who are at risk of developing addictions

Reduce the impact of Anti-Social-Behaviour in your community



We have been improving our communication with victims and our ASB services more generally. Identifying hot spot areas, including those within the Night Time Economy is really helping us to focus our resources in the right way.



Preventing and reducing burglary and the fear of burglary in your area



We have been encouraging the public to register their property on www.immobilise.com

We have introduced 'no cold calling' zones in order to reduce opportunistic doorstep criminals



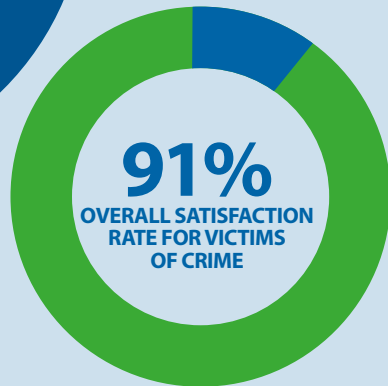
Tackling domestic and sexual abuse, particularly towards women and children



We have visited schools and academies across the area to raise awareness about sexual offences, in particular raising the profile of the "Only Yes Means Yes" campaign.



%
SOMERSET
S HAVE
E IN THEIR
CE FORCE
OR ENGLAND
OCT 2013)



Putting victims at the heart of the Criminal Justice System

We have introduced a 'Safe Places' scheme which provides a safe place for vulnerable victims to go to. Just look for the logo.

"Track my Crime" gives all victims of crime the opportunity to be updated by the police online.



How can you get involved or discuss policing concerns?



- Attend events and give us your views face-to-face
- Come along to public meetings and find out more about what we do
- Have your say through online questionnaires, consultations or web chats
- Tell us what your priorities are online through 'Have Your Say'
- Become a Special Constable, a Cadet, Custody Visitor or Volunteer
- Join Rural Watch, Neighbourhood Watch or your local Independent Advisory Group

You can find more information on any of the above and keep up-to-date with all events, meetings and news through the website:

WWW.AVONANDSOMERSET-PCC.GOV.UK

WWW.AVONANDSOMERSET.POLICE.UK

or through social media:



[@AANDSPCC](https://twitter.com/AANDSPCC), [@SUMOUNTSTEVENS](https://twitter.com/SUMOUNTSTEVENS), [@ASPOLICE](https://twitter.com/ASPOLICE)



[/AVONANDSOMERSETPOLICE](https://www.facebook.com/AVONANDSOMERSETPOLICE) /[AANDSPCC](https://www.facebook.com/AANDSPCC)







AVON & SOMERSET POLICE & CRIME COMMISSIONER

Avon and Somerset Police and Crime Commissioner
Police Headquarters, Valley Road, Portishead, BS20 8JJ

Telephone: 01275 816377

Fax: 01275 816388

WWW.AVONANDSOMERSET-PCC.GOV.UK

WWW.AVONANDSOMERSET.POLICE.UK



You can find more details about the Commissioner's Police and Crime Plan for the Avon and Somerset area at www.avonandsomerset-pcc.gov.uk